

1000W~2000W

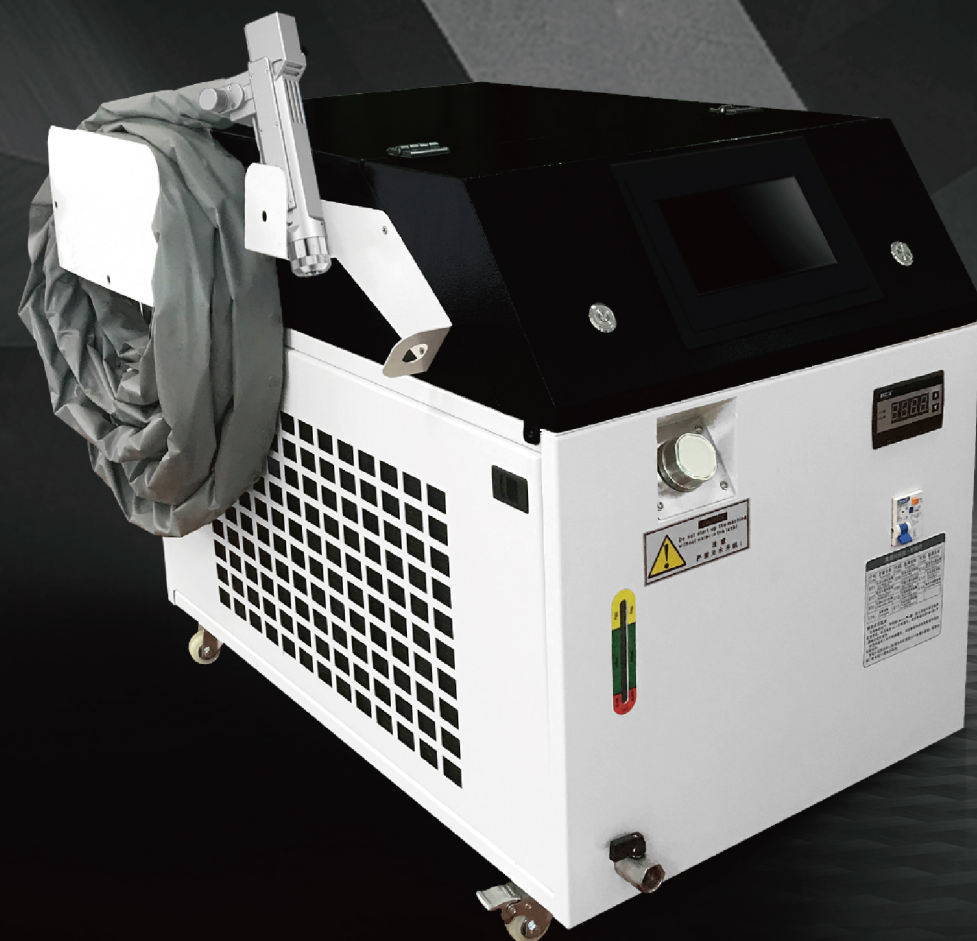
手持雷射清洗機

Handheld laser cleaning machine

耗材量低 | 靈活性強 | 操作簡單 | 焊縫美觀

清洗效果 一目了然

The cleaning effect is clear at a glance
Low consumables, Flexibility, Simple
operation, The weld seam is beautiful

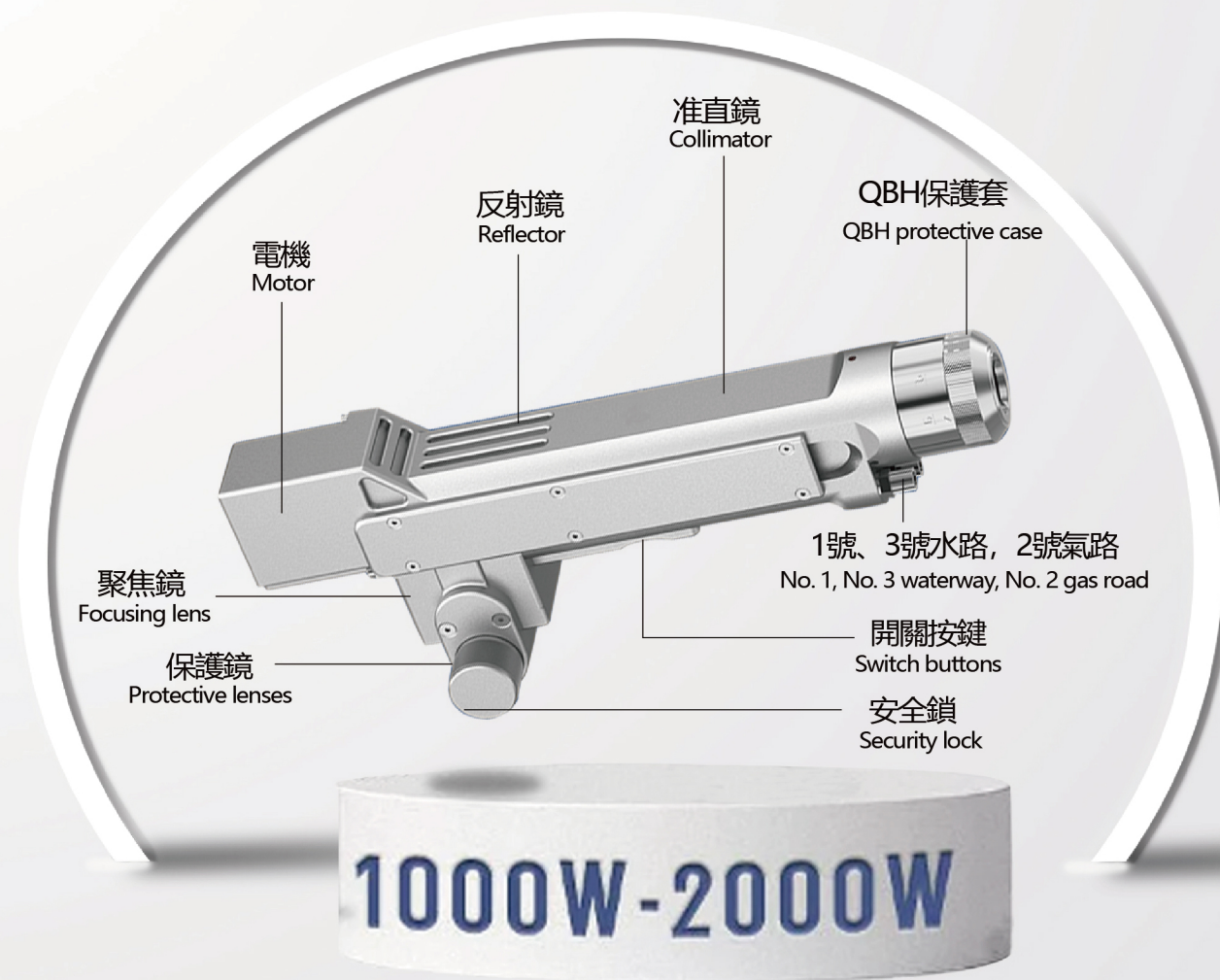


小巧美觀 ◀
精準定位 ◀
不易變形 ◀
任意角度 ◀

Small and beautiful, Precise
positioning, Not easy to deform, Any angle

enihcam 9ni naeic resal dlehdnaH

清洗雷射頭 CLEAN THE LASER HEAD



系統特色

- 智慧保護系統，移動終端APP以及PC端監控，工作狀態可實時反饋;
Intelligent protection system, mobile terminal App and PC terminal monitoring, real-time feedback of working status
- 高閾值光學元件、清洗效果更佳;
High threshold optical components, cleaning effect is more
- 多種安全鎖、安全性能更高;
A variety of safety locks, higher safety performance
- 全機身水冷設計、穩定且能支持長時間工作;
Fully water cooled design, stable and can support long working hours
- 人體工程學設計，持握屬實、輕鬆掌握。
Ergonomic design, hold true, easy to grasp.



鋒耘焊接設備成立於2005年初，以銷售變頻氬焊機、CO2/MIG變頻式鐸機及切割 / 雷射等設備為主，另有提供耗材零件出售、設備機械維修。這些年來累積純熟專業的技術，注重最優質的機器設備，以及最專業的服務為第一優先！深得客戶的信賴。

專業是我們不變的承諾，提供優質的產品是我們的宗旨，給予客戶最完整的服務是我們的信念。

Fengyun Welding Equipment was established in early 2005. It mainly sells variable frequency argon welding machine, CO2/MIG variable frequency welding machine and cutting/laser equipment, and also provides consumable parts sales and equipment mechanical maintenance. Over the years, we have accumulated proficient and professional technology, focusing on the highest quality machinery and equipment, and the most professional service as the first priority! Won the trust of customers.

Profession is our unchanging promise, providing high-quality products is our aim, and giving customers the most complete service is our belief.

提供產品包含 Product inclusions are provided

- | | |
|-----------------|---|
| 1. 變頻式氬弧鐸機 | Variable frequency argon arc machine |
| 2. 變頻式直流手工電焊機 | Frequency conversion type DC manual welding machine |
| 3. 變頻式電離子切割機 | Variable frequency electroion cutting machine |
| 4. CO2/MIG變頻式鐸機 | CO2/MIG inverter machine |

24小時服務熱線 SERVICE HOTLINE

TEL: 0955-905192 / 04-7363598

地址：彰化縣和美鎮線東路3段109-2號

網站：https://fengyun-weld.com.tw

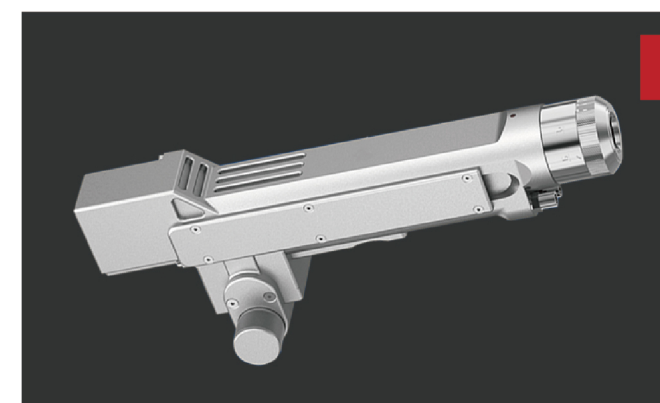


機器配置 MACHINE CONFIGURATION



清洗頭 Wash the head

01



具有清洗保護功能，安全係數高，只有感應到要清洗的金屬然後進過操作人員按下按鈕開關才能觸發雷射器工作出光，避免意外接觸開關或開關短路誤傷到人和其他物品，實現生產最大限度的安全。(起到安全保護作業左右搖擺頭)

With welding protection function, high safety factor, only sense the metal to be welded. Then the operator presses the button switch to trigger the laser to work out of the light, avoid accidental contact with the switch or switch short circuit to injure people and other items, and achieve the best production Maximum safety. (Swing head left and right for safety protection work)

控制系統 control the system

02



性能穩定，操作簡單，控制精確送絲順暢
穩定，簡潔的工作介面

Stable performance, simple operation, smooth and stable control of precise wire feeding, simple working interface

雷射器 laser

03



採用水冷，緊湊型結構設計，其電光轉換率高於35%，且免維護運行等特點，成本效益高，遠遠優於其他類型同等功率的雷射器。採用國際標準的光纖QBH輸出頭，國際標準的RS232串口控制。

With water-cooled, compact structure design, its electro-optical conversion efficiency is higher than 35%, and maintenance free operation and other features, it is cost-effective, far superior to other types of lasers with the same power. Adopt international standard optical fiber QBH output head, and international standard RS232 serial port control

冷水系統 cold water system

04



冷水機統一配套安裝上過濾器，安全環保省點耐用，工作性能穩定，使用壽命長，雙溫雙控

The chiller is equipped with a filter, which is safe and environmentally friendly, power saving and durable, stable in working performance, long in service life, and double temperature and double control.

產品參數
PRODUCT PARAMETERS

清洗機型號	GY-HW1000	GY-HW1500	GY-HW2000
雷射器類型	連續光纖激光器		
雷射功率	1000W~2000W		
光纖纖徑	50μm-100μm		
雷射波長	1070nm~1080nm		
功率調節範圍	1%-100%		
可調幅面	1-150mm		
准直焦距	50		
聚焦焦距	600		
保護窗規格	D30×2		
冷卻方式	水冷		
整機重量	380KG		
整機功率	6.5KW		
供電電壓	220V/380V	50hz/60hz	

適用行業 Applicable industries

模具清洗、舊漆清洗、樓宇清洗、電子工業、船舶行業、軍工領域、鋼軌清洗、去油污、鐵鏽、膠粘劑殘留物等等。
Mold cleaning, old paint cleaning, building cleaning, electronic industry, shipbuilding industry, military field, rail cleaning, degreasing stains, rust, adhesive residue Leave things and so on.



應用範圍 CLEANING ADVANTAGES

- ▶ 施工環境無要求，清洗效率高；
- ▶ 操作簡單，人員勞動強度低；
- ▶ 無噪音，清潔程度高；
- ▶ 清洗與處理同步，實現清洗過程零排放；
- ▶ 無耗材，無污染，不需要化學藥劑，無殘留，綠色環保；
- ▶ 無明火，安全程度高；
- ▶ 可實現對厚重污染物的快讀清理及輕度污染物高速清洗；
- ▶ 行業適用性廣泛；運行成本低。

The construction environment is not required, and the cleaning efficiency is high;
Simple operation, low labor intensity of personnel;
No noise, clean Chengdu high;
Cleaning and treatment are synchronized to achieve zero emission in the cleaning process;
No consumables, no pollution, no chemical agents, no residue, green environmental protection;
No open flame, high degree of safety;
It can realize fast reading cleaning of heavy pollutants and high-speed cleaning of light pollutants;
Wide range of industry applicability;
Low operating costs.

清洗樣品 Wash the sample

